



art. **Nabucco**

cat. **84**

Specifiche tecniche / Technical specifications



Composizione / Composition
100% PL



Peso / Weight
640 gr/mtl



Solidità alla luce / Colour fastness
4/5



Resistenza al piling / Piling
4/5



Resistenza alla abrasione / Abrasion test
30.000



Sfregamento umido / colour fastness to rubbing wet
4/5



Sfregamento asciutto / colour fastness to rubbing dry
4

Simboli manutenzione / Care symbol



Tra i vari lotti possono verificarsi delle variazioni nel colore
Colour differences between dying lots are possible



405



100



101



402



504



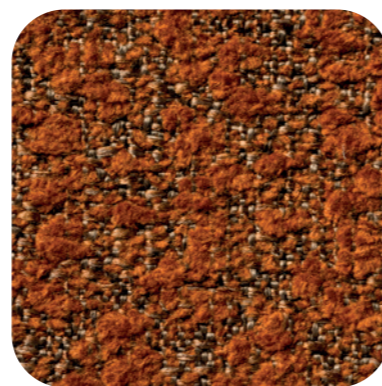
600



400



401



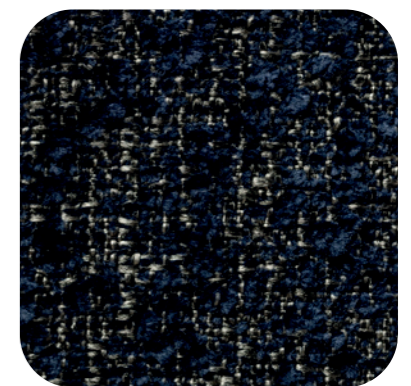
303



800



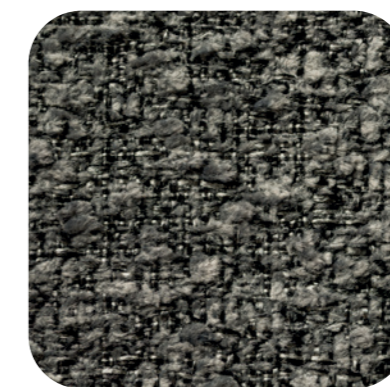
801



704



601



610



200