

**Dettaglio in metallo**

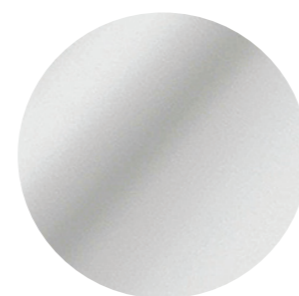
Metal detail - Détail en metal - Detalle de metal



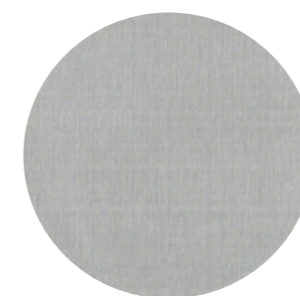
**Piede in metallo**

Metal feet - Pied en metal - Patas de metal

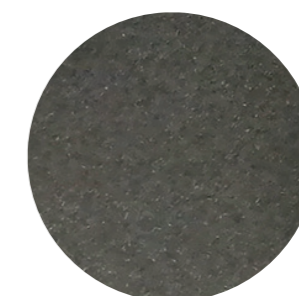
**Finitura metallo**  
Metal finishings - Finition de metal - Acabados de metal



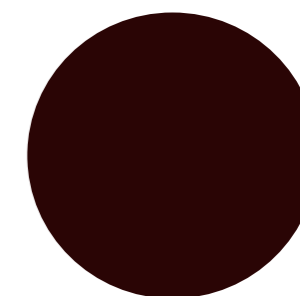
**10**  
**Lucido**  
Chrome  
Brillant  
Brillante



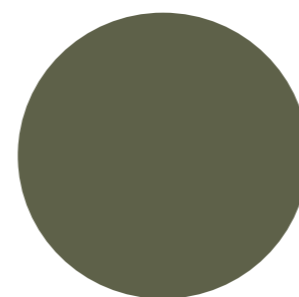
**11**  
**Satinato**  
Brushed  
Mat  
Satinado



**22**  
**Bronzato**  
Bronze  
Bronze  
Bronce



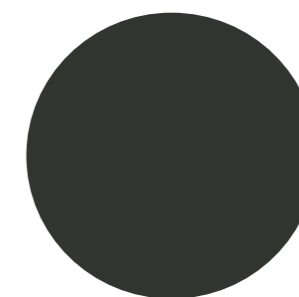
**26**  
**Marrone**  
Dark brown  
Marron  
Marrón



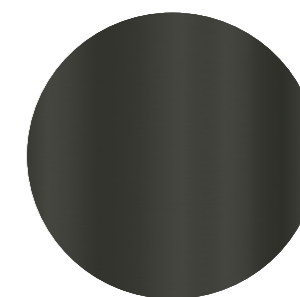
**37**  
**Mastice**  
Darke taupe  
Mastic  
Masilla



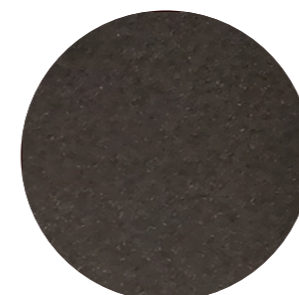
**41**  
**Ferro calamina**  
Calamine iron  
Fer calamine  
Hierro calamina



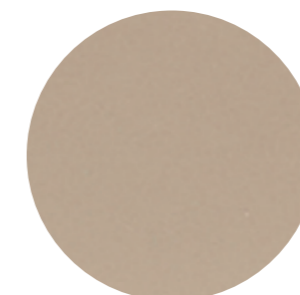
**42**  
**Grigio scuro**  
Dark grey  
Gris foncé  
Gris oscuro



**46**  
**Titanio**  
Titanium  
Titane  
Titanio



**47**  
**Bronzo Antico**  
Antique Bronze  
Bronze antique  
Bronce antiguo



**48**  
**Sabbiato**  
Sandblasted  
Sablé  
Arenado