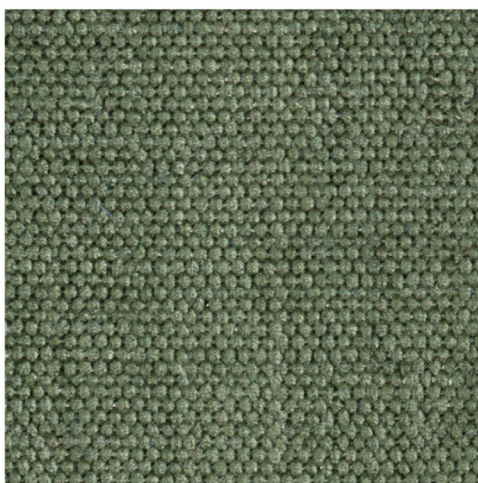


TESSUTI



Nirvana cat.70

Composizione: **97% PL - 3% LI**

Peso: **440 gr/mq**

Solidità alla lucc: **3/4**

Resistenza al piling: **4/5**

Resistenza alla abrasione: **43.000 martindale**

Sfregamento umido: **da 4 a 5**

Sfregamento asciutto: **da 4 a 5**



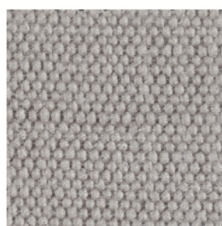
Tessuto idrorepellente



Tessuti
NIRVANA 20



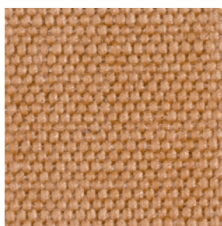
Tessuti
NIRVANA 1



Tessuti
NIRVANA 130



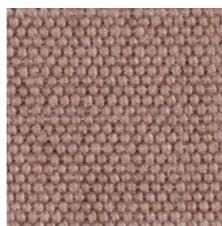
Tessuti
NIRVANA 636



Tessuti
NIRVANA 7



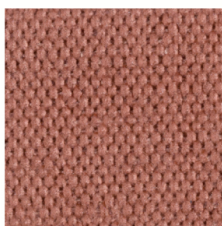
Tessuti
NIRVANA 622



Tessuti
NIRVANA 646



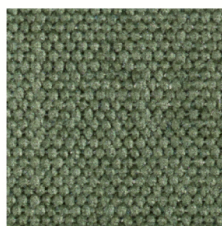
Tessuti
NIRVANA 640



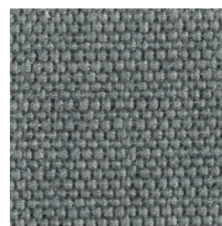
Tessuti
NIRVANA 650



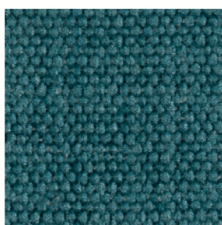
Tessuti
NIRVANA 654



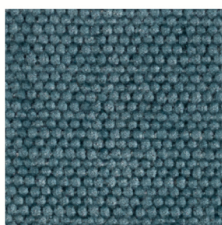
Tessuti
NIRVANA 13



Tessuti
NIRVANA 56



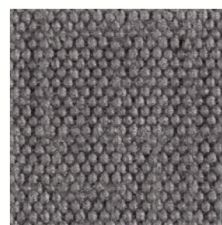
Tessuti
NIRVANA 655



Tessuti
NIRVANA 14



Tessuti
NIRVANA 205



Tessuti
NIRVANA 657