



art. **Milos**

cat. **95**

Specifiche tecniche / Technical specifications



Composizione / Composition  
**56% CO - 38% PL - 6% VI**



Peso / Weight  
**600 gr/mq**



Solidità alla luce / Colour fastness  
**5/6**



Resistenza al piling / Piling  
**4**



Resistenza alla abrasione / Abrasion test  
**40.000**



Sfregamneto umido / colour fastness to rubbing wet  
**3**

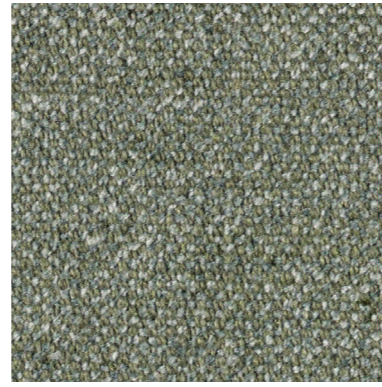


Sfregamneto asciutto / colour fastness to rubbing dry  
**4/5**

Simboli manutenzione / Care symbol



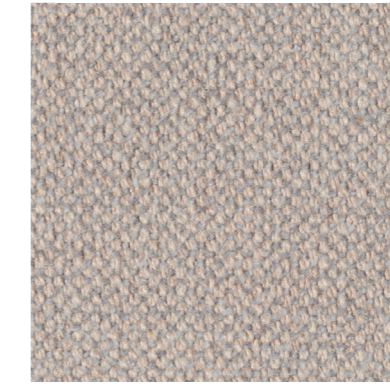
Tra i vari lotti possono verificarsi delle variazioni nel colore  
Colour differences between dying lots are possible



18



10



12



13



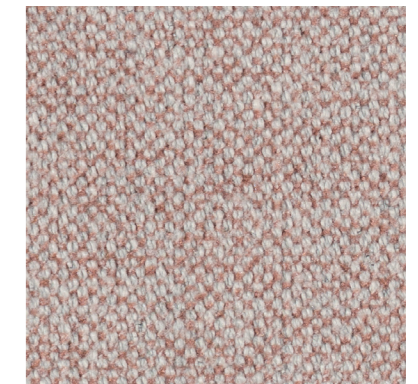
24



14



16



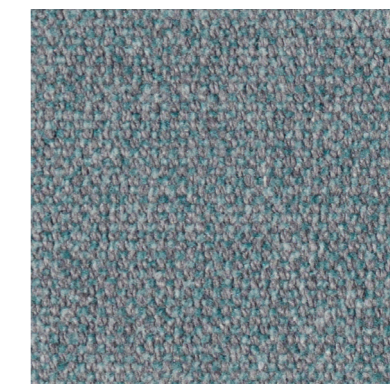
15



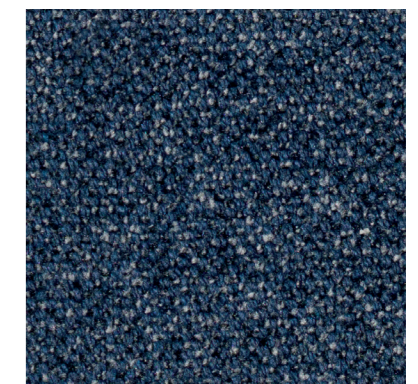
19



23



25



26



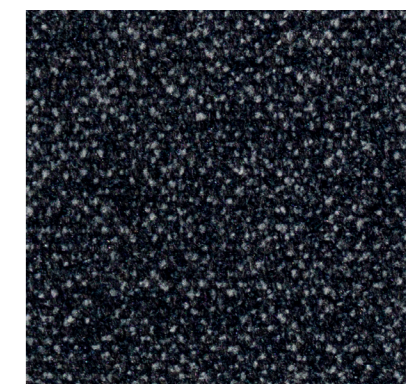
17



22



21



20