



art. **Loto**

cat. **95**

Specifiche tecniche / Technical specifications



Composizione / Composition
19% LI - 64% VI - 13% CO - 4% PL



Peso / Weight
820 gr/ml



Solidità alla luce / Colour fastness
4/5



Resistenza al piling / Piling
4



Resistenza alla abrasione / Abrasion test
35.000



Sfregamneto umido / colour fastness to rubbing wet
3/4

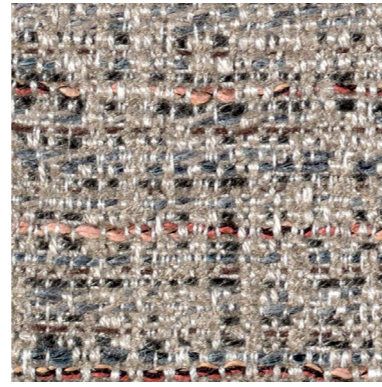


Sfregamneto asciutto / colour fastness to rubbing dry
4

Simboli manutenzione / Care symbol



Tra i vari lotti possono verificarsi delle variazioni nel colore
Colour differences between dying lots are possible



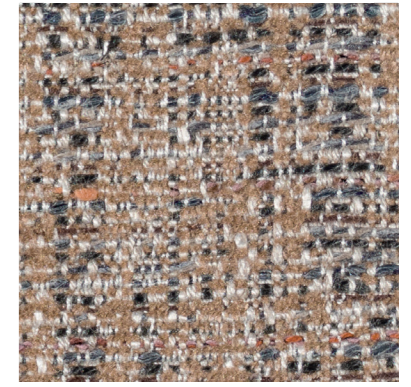
15



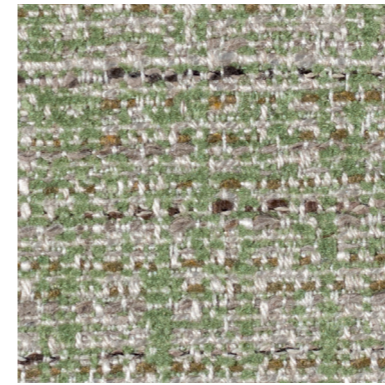
11



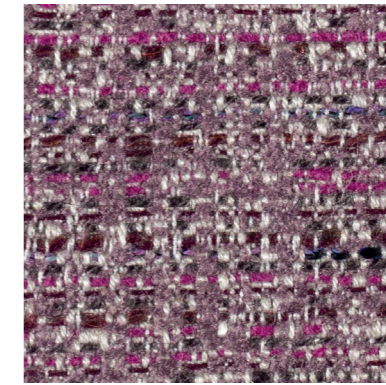
13



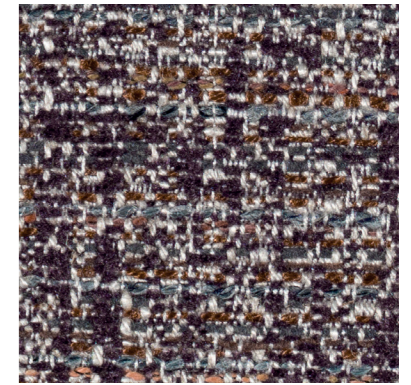
12



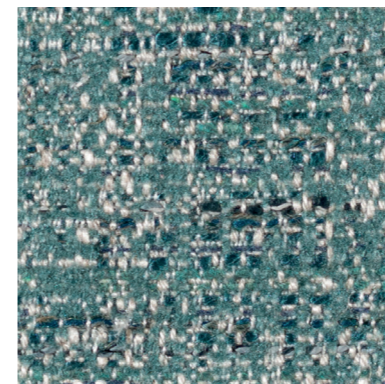
6



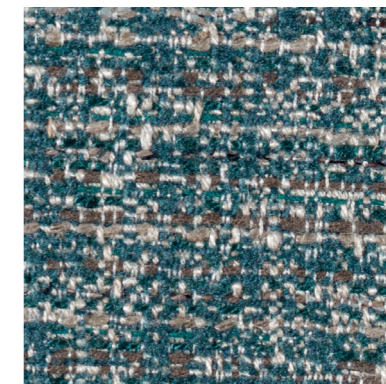
14



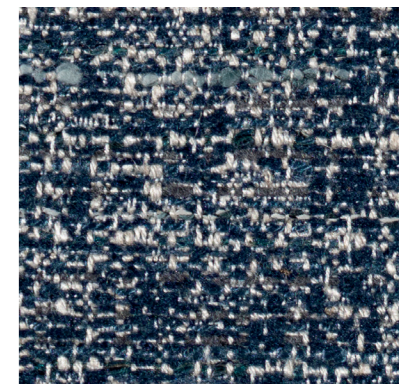
5



4



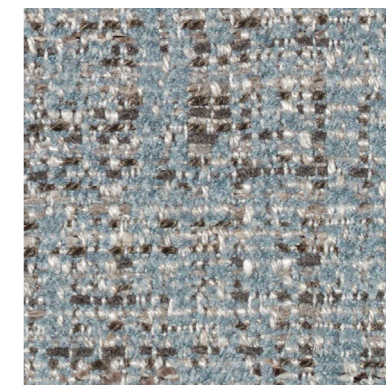
3



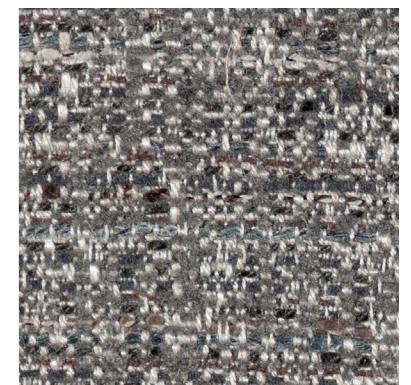
8



10



2



7