



art. **Sakè**

cat. **90**

Specifiche tecniche / Technical specifications



Composizione / Composition
34% CO - 32% VI - 13%AC - 14%LI - 7%PL



Peso / Weight
890 gr/mtl



Solidità alla luce / Colour fastness
4/5



Resistenza al piling / Piling
4



Resistenza alla abrasione / Abrasion test
40.000



Sfregamento umido / colour fastness to rubbing wet
4



Sfregamento asciutto / colour fastness to rubbing dry
4

Simboli manutenzione / Care symbol



Tra i vari lotti possono verificarsi delle variazioni nel colore
Colour differences between dying lots are possible



06



10



11



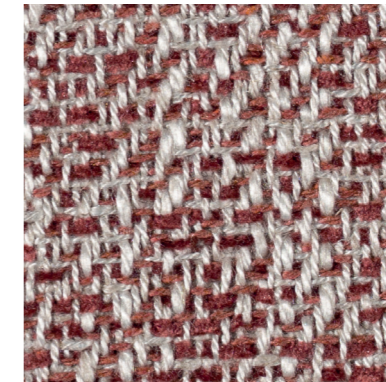
12



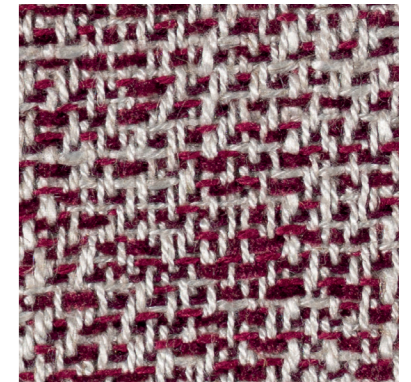
46



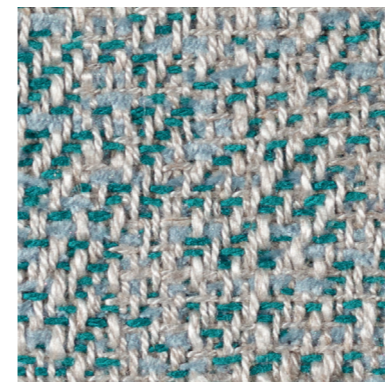
20



45



25



42



22



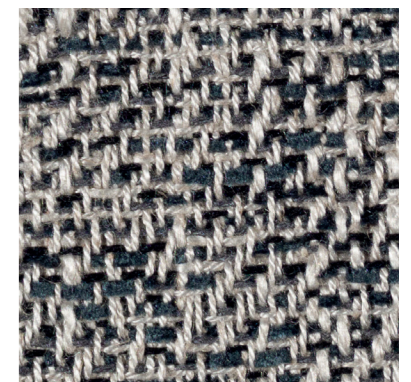
03



13



02



01