



art. **Ninfea**

cat. **90**

Specifiche tecniche / Technical specifications



Composizione / Composition
74% PL - 26% VI



Peso / Weight
920 gr/mtl



Solidità alla luce / Colour fastness
6



Resistenza al piling / Piling
5



Resistenza alla abrasione / Abrasion test
60.000



Sfregamento umido / colour fastness to rubbing wet
4/5



Sfregamento asciutto / colour fastness to rubbing dry
4/5

Simboli manutenzione / Care symbol



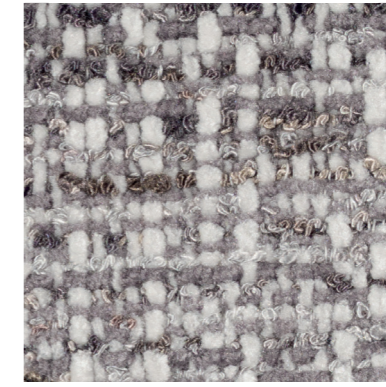
Tra i vari lotti possono verificarsi delle variazioni nel colore
Colour differences between dying lots are possible



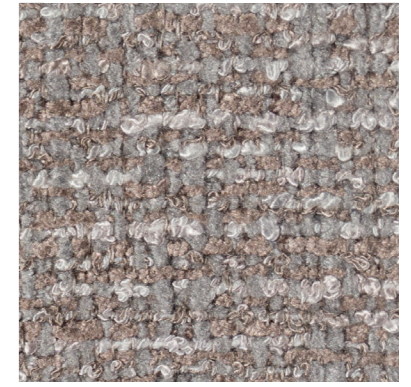
751



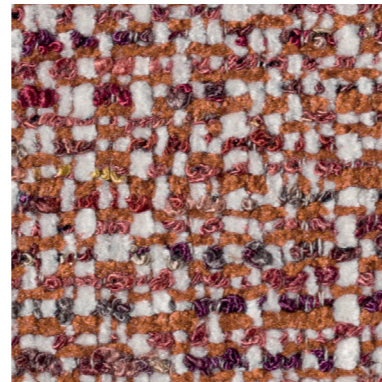
11



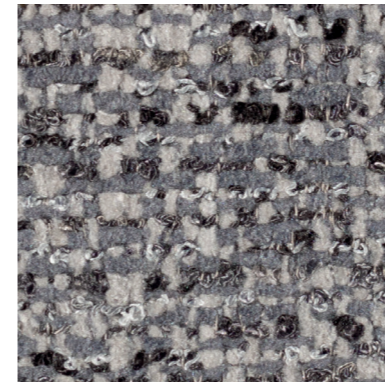
121



4



718



45



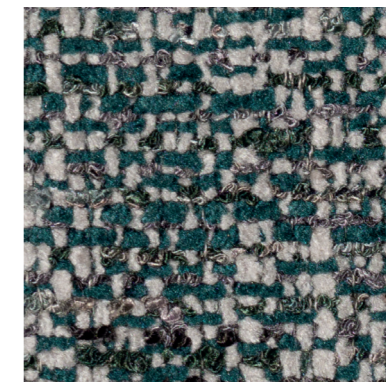
8



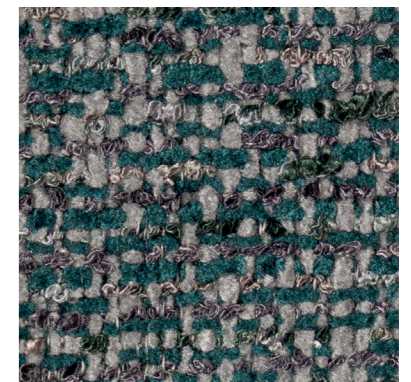
30



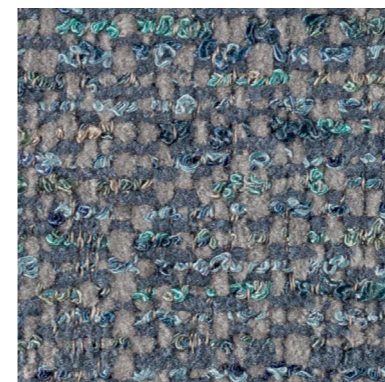
36



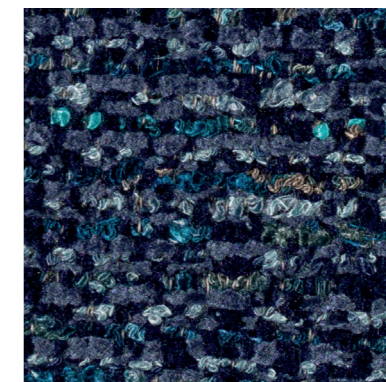
436



753



750



10



46