



art. **Idra**

cat. **90**

Specifiche tecniche / Technical specifications



Composizione / Composition
33% CO - 43% VI - 15% LI - 9% PL



Peso / Weight
925 gr/mtl



Solidità alla luce / Colour fastness
5



Resistenza al piling / Piling
4



Resistenza alla abrasione / Abrasion test
45.000



Sfregamento umido / colour fastness to rubbing wet
3/4



Sfregamento asciutto / colour fastness to rubbing dry
4

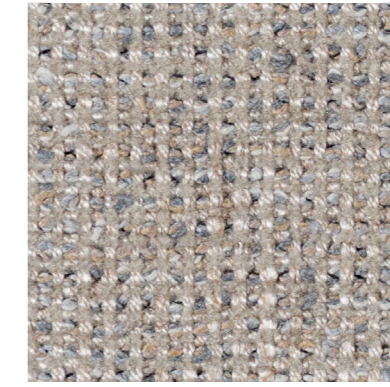
Simboli manutenzione / Care symbol



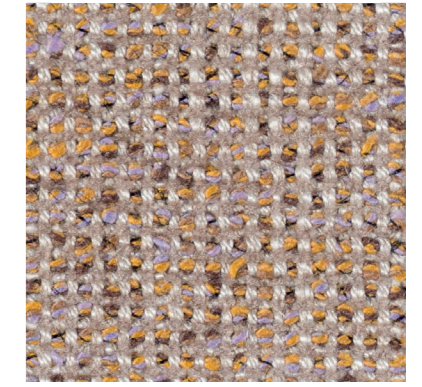
Tra i vari lotti possono verificarsi delle variazioni nel colore
Colour differences between dying lots are possible



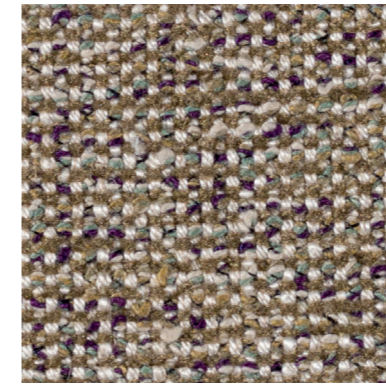
100



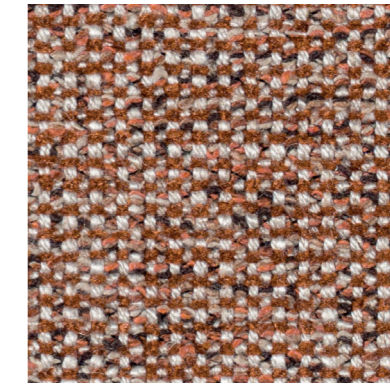
600



502



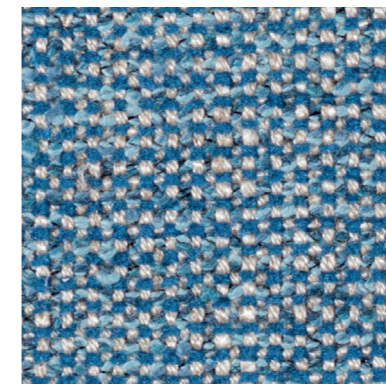
801



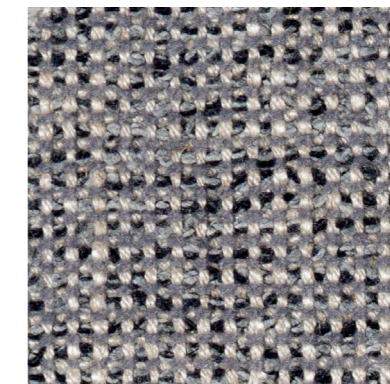
304



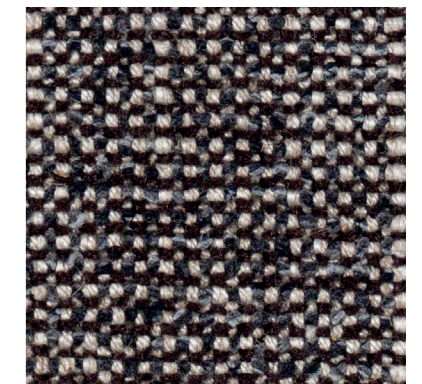
900



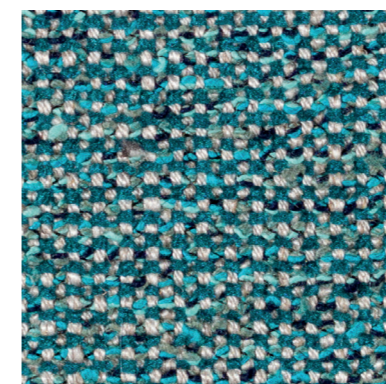
700



605



200



701



400