



art. **Tignanello**

cat. **84**

Specifiche tecniche / Technical specifications



Composizione / Composition
70% PL - 30% PC



Peso / Weight
670 gr/mtl



Solidità alla luce / Colour fastness
5



Resistenza al piling / Piling
4



Resistenza alla abrasione / Abrasion test
50.000



Sfregamento umido / colour fastness to rubbing wet
4/5

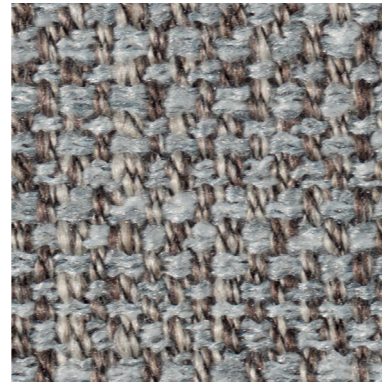


Sfregamento asciutto / colour fastness to rubbing dry
4/5

Simboli manutenzione / Care symbol



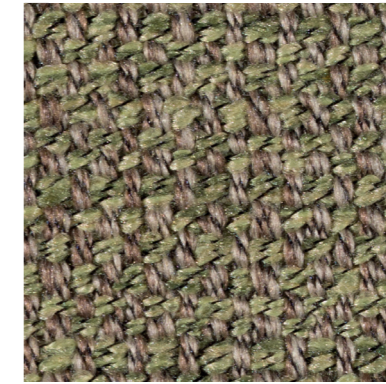
Tra i vari lotti possono verificarsi delle variazioni nel colore
Colour differences between dying lots are possible



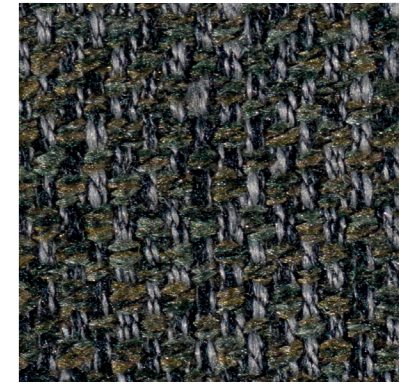
5



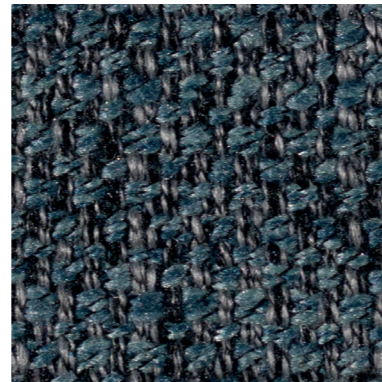
20



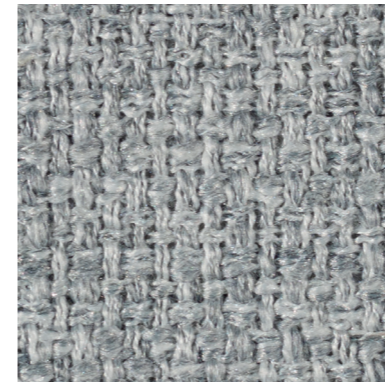
24



204



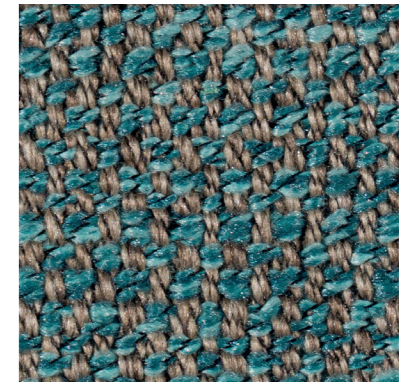
14



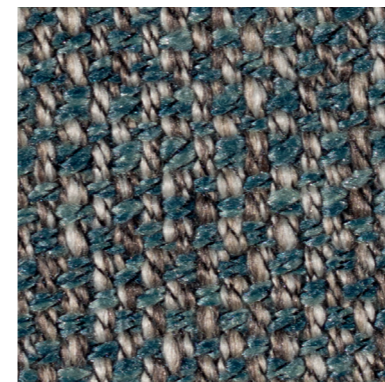
19



17



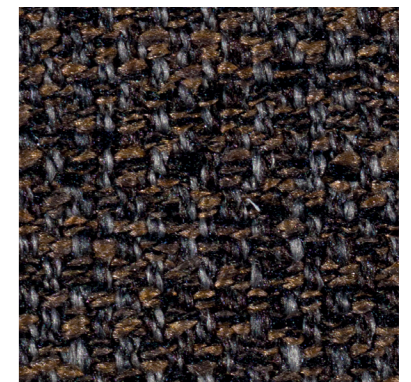
21



16



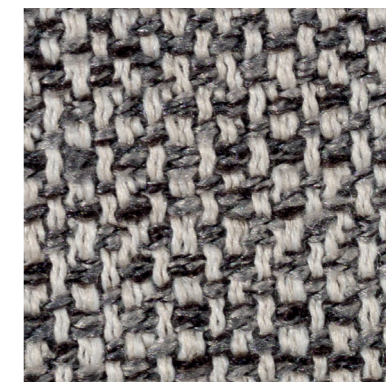
666



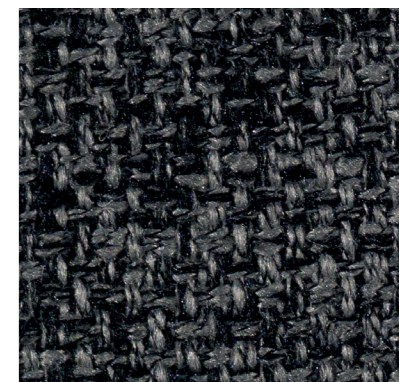
2100



02



622



205