



art. **Merida**

cat. **84**

Specifiche tecniche / Technical specifications



Composizione / Composition  
**90% PL - 10% VI**



Peso / Weight  
**490 gr/mtl**



Solidità alla luce / Colour fastness  
**4/5**



Resistenza al piling / Piling  
**5**



Resistenza alla abrasione / Abrasion test  
**> 100.000**



Sfregamento umido / colour fastness to rubbing wet  
**4/5**



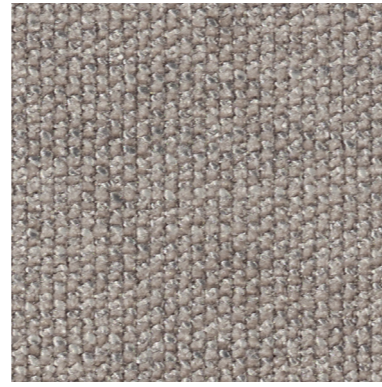
Sfregamento asciutto / colour fastness to rubbing dry  
**4**

Simboli manutenzione / Care symbol



Tessuto Idrorepellente / Water Repellent

Tra i vari lotti possono verificarsi delle variazioni nel colore  
Colour differences between dying lots are possible



24



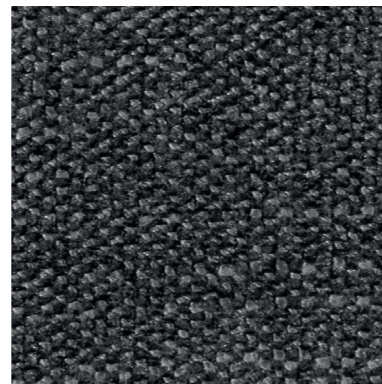
04



14



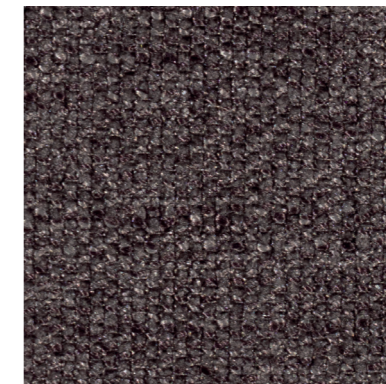
54



46



25



64



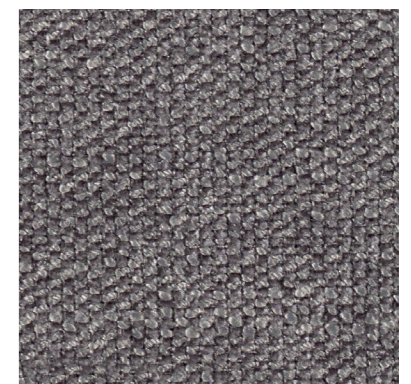
84



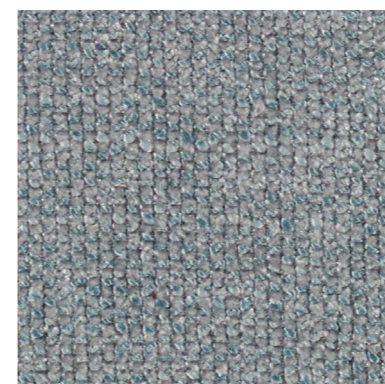
08



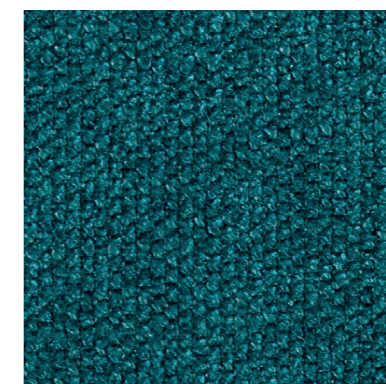
48



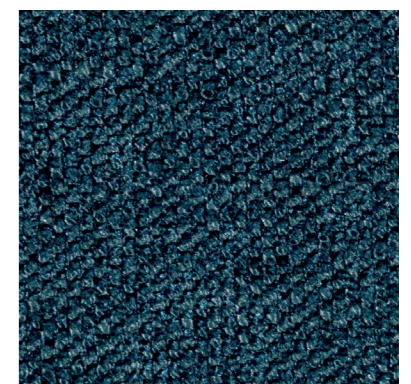
26



07



57



47