



art. **Samba Plain**

cat. **80**

Specifiche tecniche / Technical specifications



Composizione / Composition
100% PL



Peso / Weight
450 gr/mtl



Solidità alla luce / Colour fastness
5



Resistenza al piling / Piling
4/5



Resistenza alla abrasione / Abrasion test
60.000



Sfregamento umido / colour fastness to rubbing wet
3/4



Sfregamento asciutto / colour fastness to rubbing dry
4

Simboli manutenzione / Care symbol

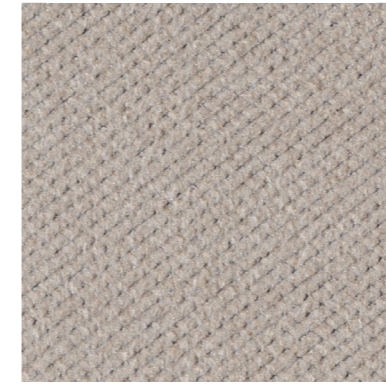


Tessuto Idrorepellente / Water Repellent

Tra i vari lotti possono verificarsi delle variazioni nel colore
Colour differences between dying lots are possible



31



11



10



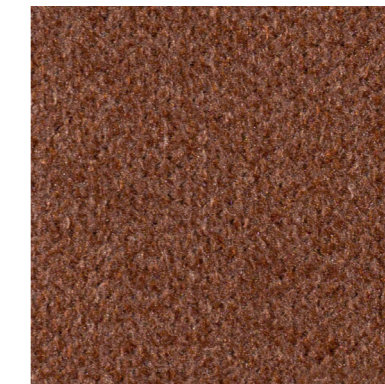
51



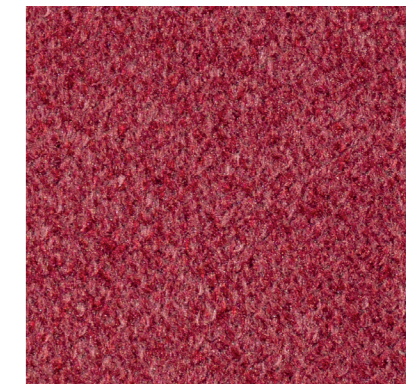
30



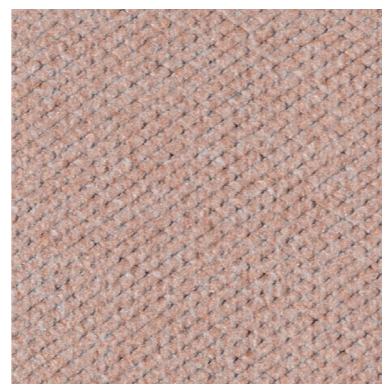
40



41



60



61



71



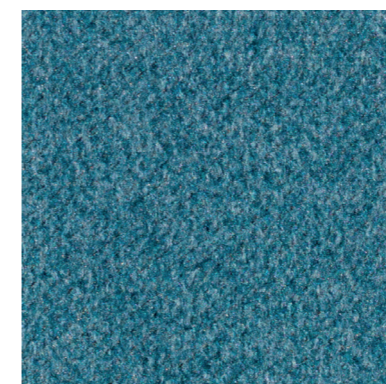
80



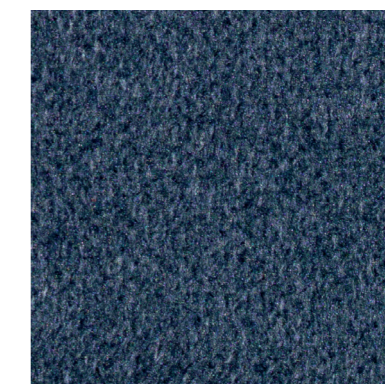
21



62



22



20



90