



art. **Kent**

cat. **80**

Specifiche tecniche / Technical specifications



Composizione / Composition
100% PL



Peso / Weight
590 gr/mtl



Solidità alla luce / Colour fastness
4



Resistenza al piling / Piling
4



Resistenza alla abrasione / Abrasion test
80.000



Sfregamento umido / colour fastness to rubbing wet
4



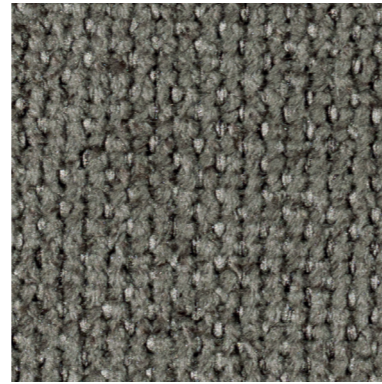
Sfregamento asciutto / colour fastness to rubbing dry
4/5

Simboli manutenzione / Care symbol

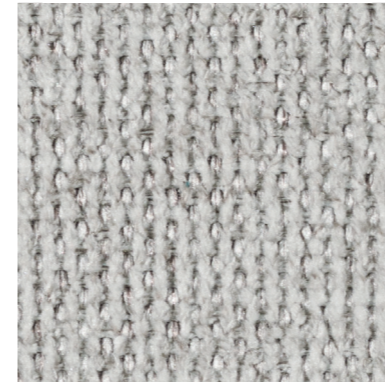


Tessuto Idrorepellente / Water Repellent
Tessuto Smacchiabile / Stain resistant

Tra i vari lotti possono verificarsi delle variazioni nel colore
Colour differences between dying lots are possible



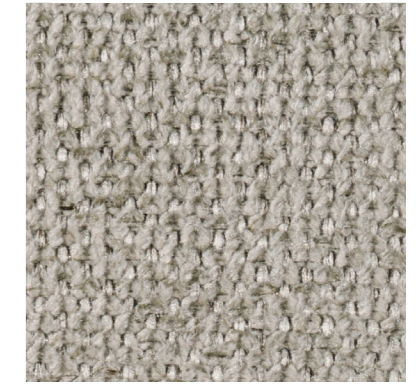
600



101



102



400



503



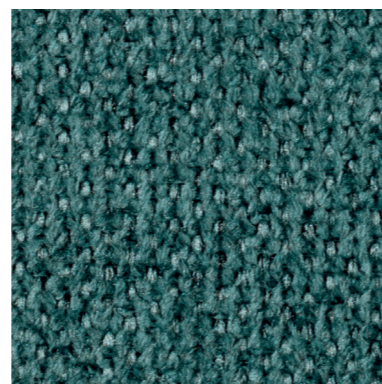
401



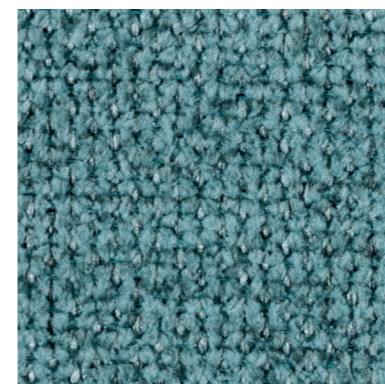
603



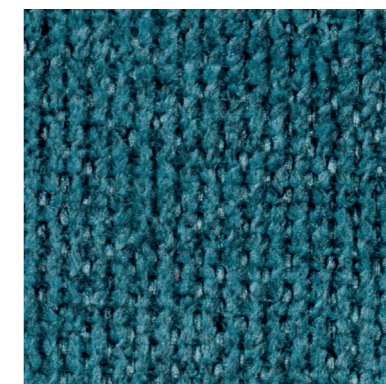
405



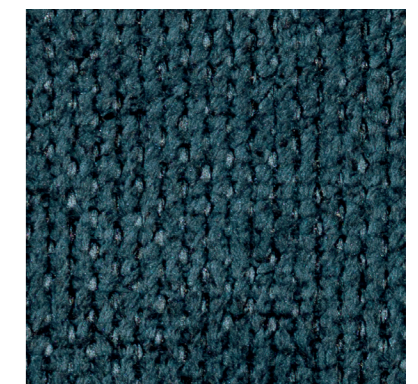
700



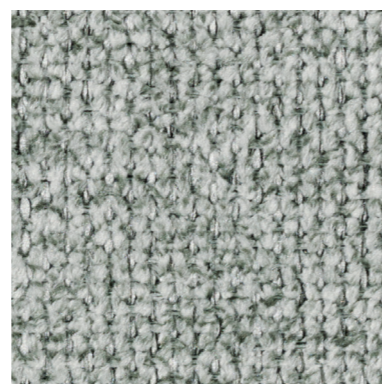
702



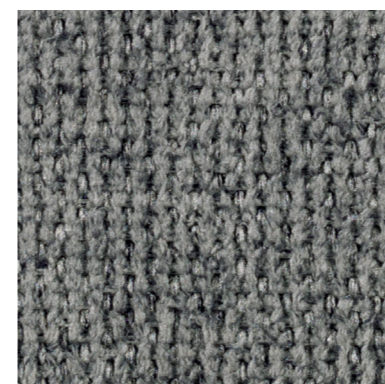
707



701



602



606



605



601