



art. **Nirvana**

cat. **70**

Specifiche tecniche / Technical specifications



Composizione / Composition
97% PL - 3% LI



Peso / Weight
440 gr/mq



Solidità alla luce / Colour fastness
3/4



Resistenza al piling / Piling
4/5



Resistenza alla abrasione / Abrasion test
43.000



Sfregamento umido / colour fastness to rubbing wet
da /from **4** a/to **5**



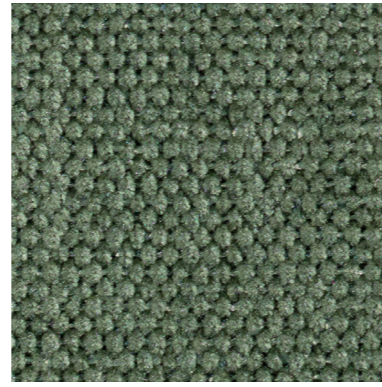
Sfregamento asciutto / colour fastness to rubbing dry
da /from **4** a/to **5**

Simboli manutenzione / Care symbol



Tessuto Idrorepellente / Water Repellent

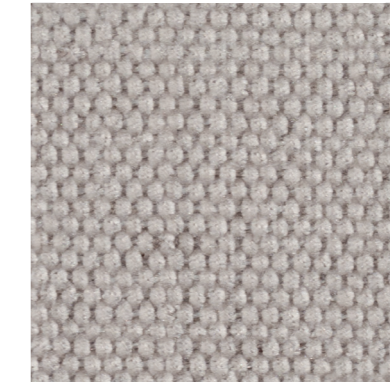
Tra i vari lotti possono verificarsi delle variazioni nel colore
Colour differences between dyeing lots are possible



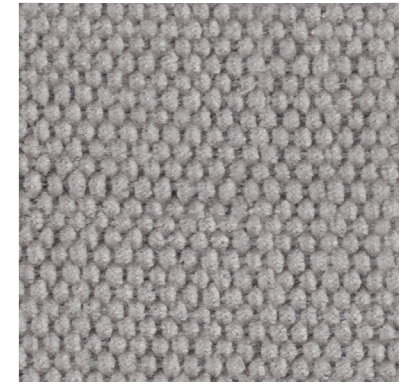
13



20



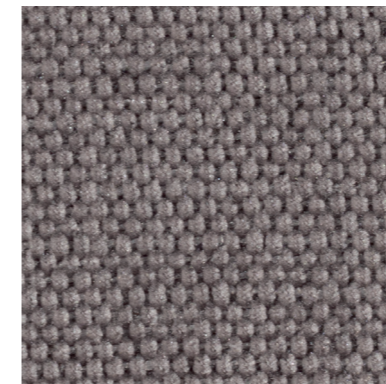
1



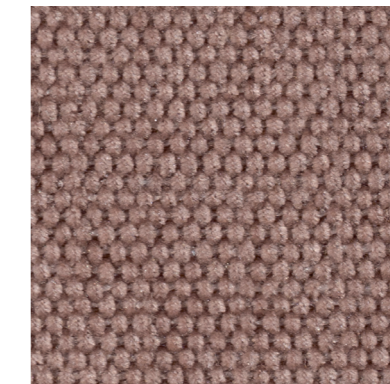
130



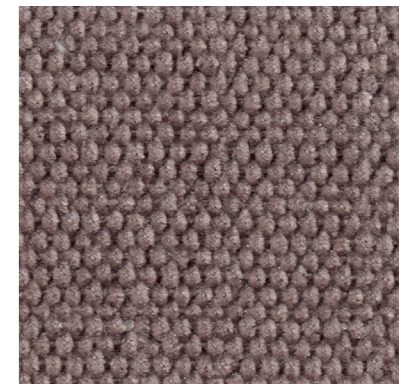
636



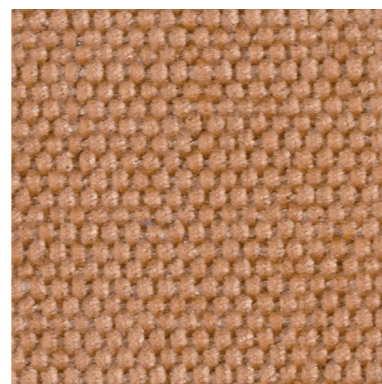
622



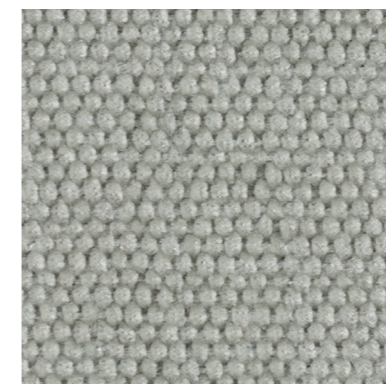
646



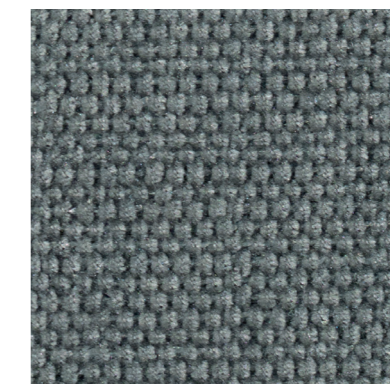
640



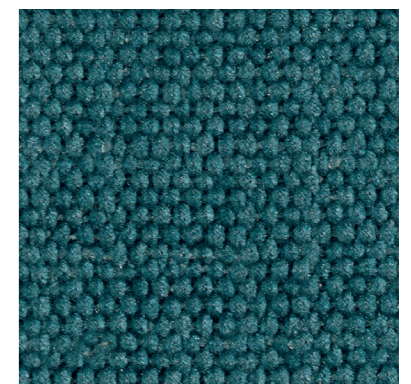
7



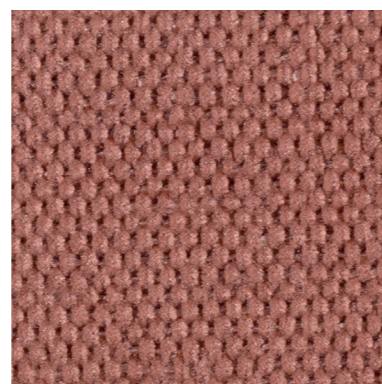
654



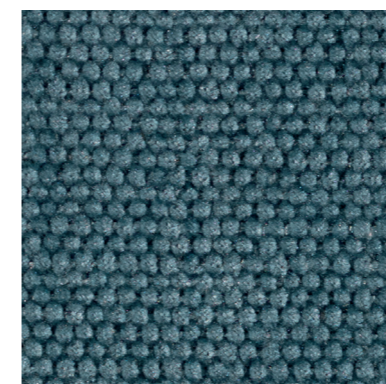
56



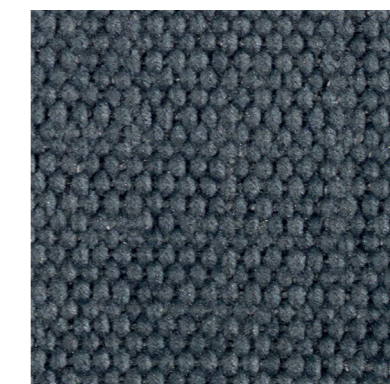
655



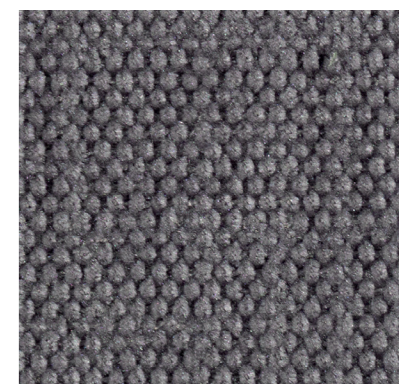
650



14



205



657