



art. **Brutus**

cat. **70**

Specifiche tecniche / Technical specifications



Composizione / Composition  
**100% PL**



Peso / Weight  
**812 gr/mtl**



Solidità alla luce / Colour fastness  
**4**



Resistenza al piling / Piling  
**4**



Resistenza alla abrasione / Abrasion test  
**>30.000**



Sfregamneto umido / colour fastness to rubbing wet  
**4/5**



Sfregamneto asciutto / colour fastness to rubbing dry  
**4**

Norme di resistenza al fuoco / Fire proof norms  
**BS 5852 Part I - pass**  
**EN1021-1 pass**

Simboli manutenzione / Care symbol

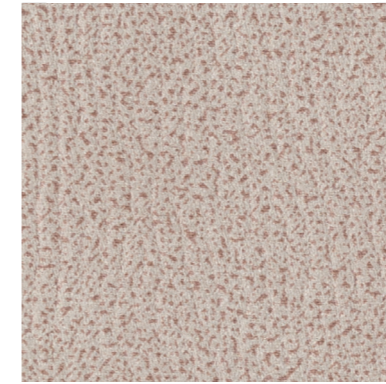


Tessuto Idrorepellente / Water Repellent

Tra i vari lotti possono verificarsi delle variazioni nel colore  
Colour differences between dying lots are possible



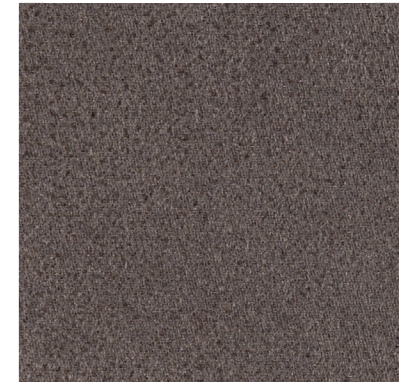
Camel 03



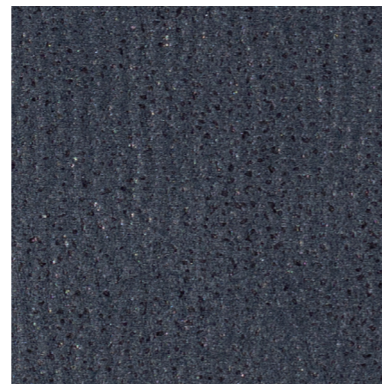
Toffee 02



Light Grey 01



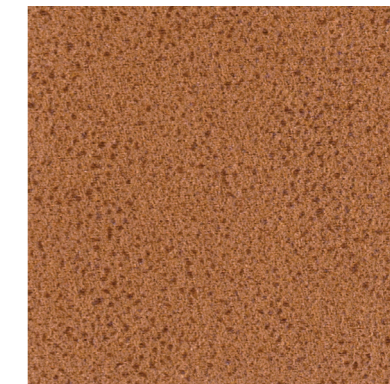
Elephant 08



Ocean 15



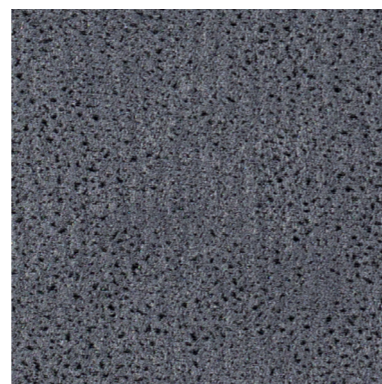
Mostaza 13



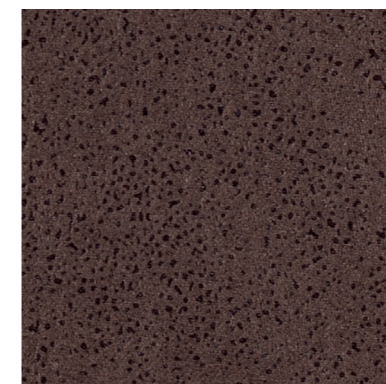
Caramello 05



Cuio 06



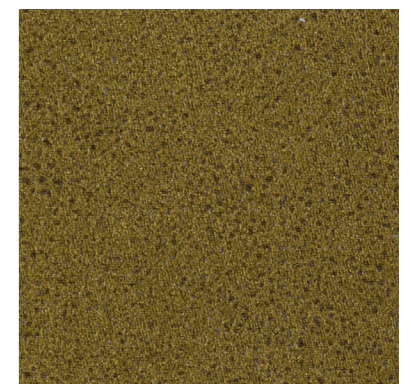
Ice Lake 16



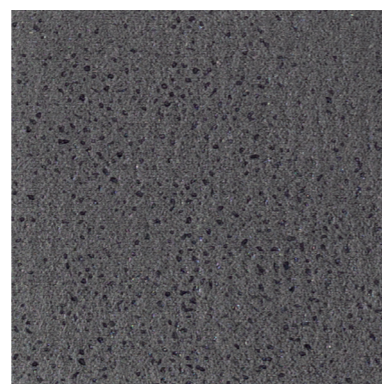
Chocolate 07



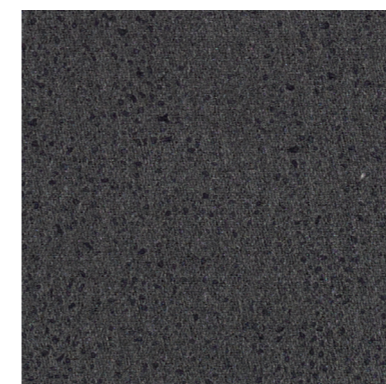
Dark Brown 04



Moss 12



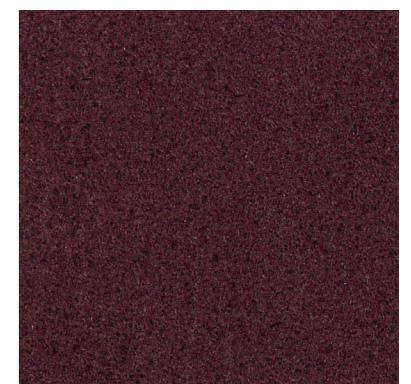
Grey Stone 17



Dark Grey 09



Black 10



Bordeaux 11