



art. **Armonia**

cat. **70**

Specifiche tecniche / Technical specifications



Composizione / Composition
90% PL - 10% PC



Peso / Weight
560 gr/mtl



Solidità alla luce / Colour fastness
3/4



Resistenza al piling / Piling
4



Resistenza alla abrasione / Abrasion test
60.000



Sfregamento umido / colour fastness to rubbing wet
da /from **3/4** a/to **5**



Sfregamento asciutto / colour fastness to rubbing dry
da /from **3/4** a/to **5**

Simboli manutenzione / Care symbol



Tessuto Idrorepellente / Water Repellent

Tra i vari lotti possono verificarsi delle variazioni nel colore
Colour differences between dying lots are possible



204



20



02



130



615



03



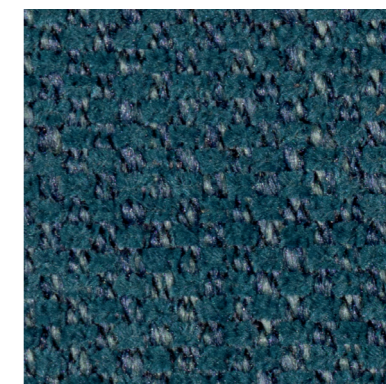
622



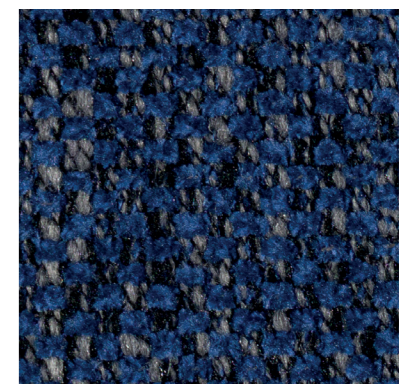
102



616



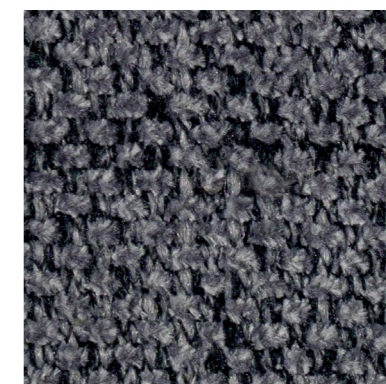
15



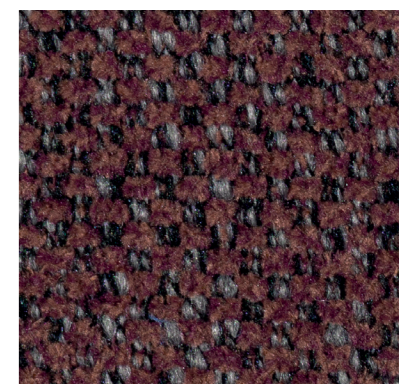
14



17



205



80